

Building & Converting PulseCMS Templates

Part A: Quick Start with HTML



You can [watch the video above](#) (based on Pulse 4), or read below to get started. Pulse CMS uses a centrally located template system to render all pages. You can use the default theme, other pre-made themes or import your own design. The theme files are located in the 'template' folder, with the following folder structure:

```
template
├─css
├─img
├─js
└─layout.php
```

The **layout.php** file contains the main structure of the template while the css, js, and img folders have the supporting files. Essentially, the **layout.php** file is just a simple HTML page with a few special tags that pull in the content from Pulse.

Below is an example of a template in its most simple form. As you can see it is just a regular html page with three PHP snippets for pulling in the title, description and content.

```

<!DOCTYPE html lang="<?php echo \pulsecore\language_to_iso(\pulsecore\wedge\config\get_json
_configs()->json->language); ?>">
<html>
    <head>
        <title><?php echo $page_title; ?></title>
        <meta name="description" content="<?php echo $page_desc; ?>"><br>        <br>        <?p hp
echo \pulsecore\get_context()->theme->meta->render(); ?><br>        <br>        <link rel="stylesheet"
href="<?php echo $path; ?>/pulsecore/asset/css/pulsecore.css">
        {{theme_css}}
        {{theme_js}}
        <!-- OGP PLACEHOLDER -->
        <!-- GOOGLE ANALYTICS &mdash;>
    </head>
    <body <?php echo \pulsecore\get_context()->theme->body_tag->render(array('')); ?> >
        <br>        {{navigation_logged_in}}{{navigation}}
        <br>        <?php echo (isset($parsedown) ? $parsedown->text($content) : $content); ?>
        <br>        <?php echo \pulsecore\get_context()->theme->made_in_pulse->render( array('b
adge_image' => (\pulsecore\wedge\config\get_json_configs()->json->path . '/content/media/br
anding/logo.svg')) ); ?>

        <!-- Stats Tracking Code -->
        <?php $http_referrer = (empty($_SERVER['HTTP_REFERER']) ? 'none' : $_SERVER['HTTP_R
EFERER']); ?>
        <script src="<?php echo $path; ?>/<?php echo $admin; ?>/inc/tracker.php?uri=<?php e
cho $_SERVER['REQUEST_URI']; ?>&ref=<?php echo $http_referrer; ?>"></script>
        {{theme_js_body}}
    </body>
</html>

```

So if you already have a template design you would like to use, you just need to copy it into **layout.php** and then place those three PHP snippets.

Multiple Templates

With Pulse you can have multiple templates on the same site. For example, if you have a page or group of pages you wish to have a different template from the rest of the site, you can use a secondary template.

The base template is stored in the 'template' folder. To create a secondary template, just add a sub-folder within the 'template' folder and place a new 'layout.php' file inside along with any supporting css or js file it uses.

If you created a new template called 'alternate' the folder structure would look like this:

```
template
└─alternate
└─css
└─img
└─js
└─layout.php
```

Using a Secondary Template

One easy way to use this alternate template on a page, is just add the following tag at the top of your page:

```
{{template:alternate}}
```

Alternatively, you can set a default template for your whole site in **Pulse Admin->Account->Settings->Extend**. Or in Admin editor for any page, under Options/Meta, you can select the Page Template you'd like on a per-page basis.

There is no limit to the number of templates you can use and you can name them anything you like.

Adding Blocks to Templates

There are some occasions when you would like to add Blocks to template pages. For example, if you would like a Block to appear on every page, such as with a footer or a sidebar. If you would like to embed a Block in your layout.php use the following:

```
{{block:sb_footer}}
```

Older versions such as Pulse 4 require this longer snippet:

```
<?php include("content/blocks/sb_footer.txt"); ?>
```

The example above inserts the text in **blocks/sb_footer.txt**.

Change the "sb_footer" or "sb_footer.txt" to the name of the Block you want to include.

Adding Pulse Tags to Templates

As with Blocks above, there may be cases when you would like to embed Pulse Tags in your template pages. For example, if you have a Slider you would like to appear before the main body content on every page or a Pulse Gallery. To do so, use the following:

```
{{gal:gallery1}}
```

Change the "gallery1" to the name of the gallery of images to use in the slider. And change the "slide.php" to "gal.php" to embed a gallery of images instead.

If you're using the older Pulse 4, you'd need a longer snippet for galleries:

```
<?php $tag_var1="gallery1"; include('inc/tags/slide.php'); ?>
```

Remember: Check out the full documentation for ways to use different tags and format your galleries: <https://www.pulsecms.com/help>

Part B: Ways to Build a Theme/Template

1. DIY Method



Read the earlier Quick Start section in this guide, and check the docs at <https://pulsecms.com/help/>. Use any HTML5 / PHP framework (Foundation, Bootstrap) and convert your own site template in minutes.

2. Use RapidWeaver for Mac



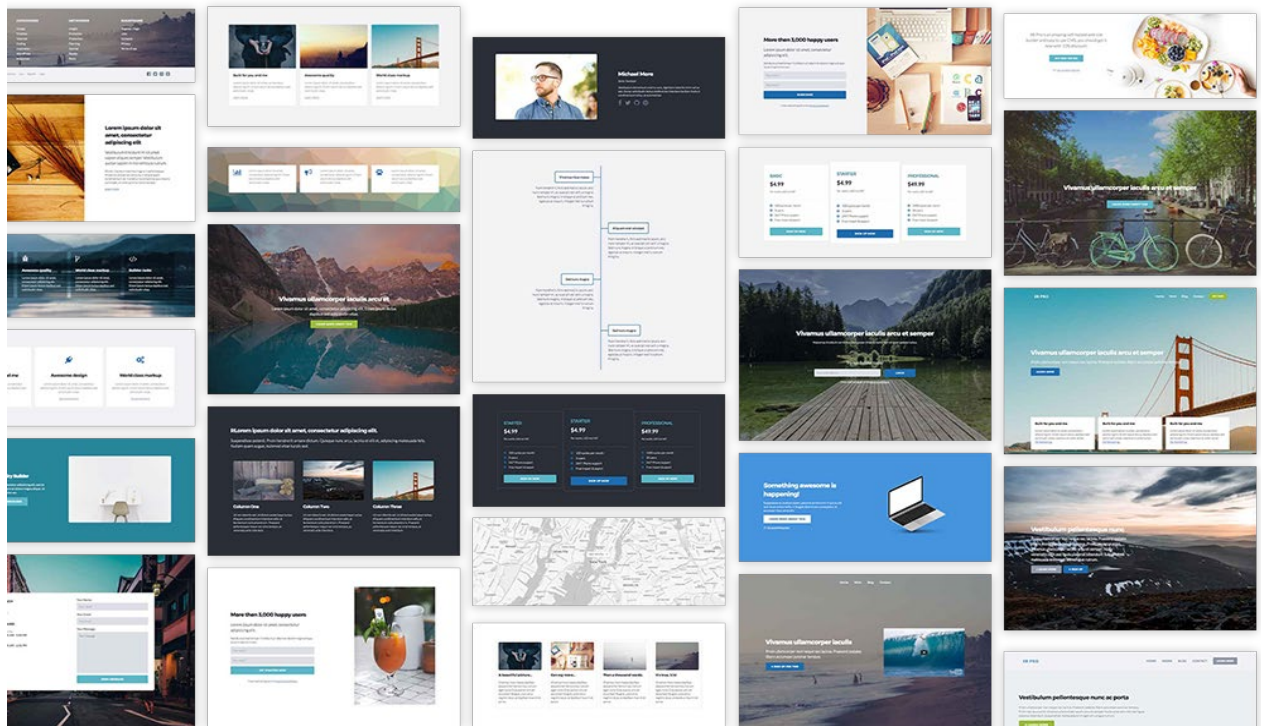
Redesigned and Reengineered For RapidWeaver Designers. Full Pulse5 integration and all you need to make your Weaved sites editable from any browser. Read more about the Pulse+RapidWeaver (<https://www.pulsecms.com/rapidweaver-cms/>).

3. Use Blocs for Mac



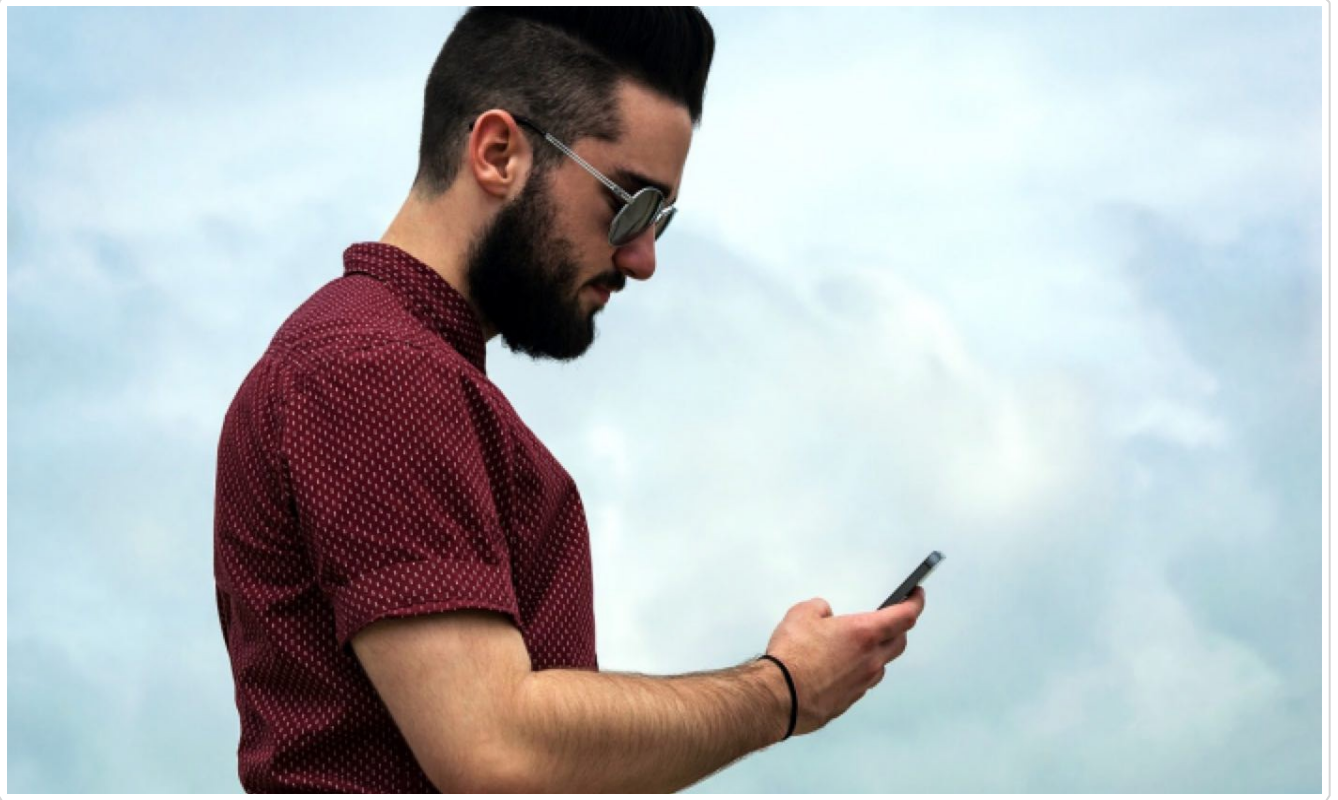
Get started and working together with this great workflow. Design in Blocs for Mac and clients can edit online with Pulse. No coding needed. Read more about the Pulse+Blocs app (<https://www.pulsecms.com/blocs-cms/>)

4. Use Pulse Builder beta for Mac and PC



Pulse Builder is currently in beta. Drag and drop your way to a beautiful Pulse site, without coding at all. Add blocks, fine tune with components and build gorgeous Pulse sites in minutes. Export as a Pulse template and upload to your Pulse site and let your customers loose on it. Read more about the Free Builder (<https://www.pulsecms.com/builder/>).

5. Call Pulse Professionals



If you need some theme porting help, want something in particular or need a larger Pulse theme customization, then contact us and we'll connect you with a local Pulse Professional to help you. They're always there for you. Or, post on the forums (<https://forum.pulsecms.com>) with what you are looking for and someone can offer their services for hire.

For more assistance, check out <https://www.pulsecms.com/help> for full docs, forum and assistance.